

# Costs

There is no additional charge for the LEOTC programme and school groups participating are admitted at considerably discounted rates.

## Entrance costs for school groups are:

N.E to Year 10	\$6.30
Year 11 to Year 13	\$7.00
ONE adult per ten children	FREE
Additional adults	\$15.00

## Pre-booking:

Bookings are essential and we recommend you book in with our Educator as early as possible to ensure your preferred date is available.

There is no limit to the number of students in a visiting school group. However, smaller groups allow students more opportunity to participate and better access to the Educators to ask questions, which will enhance the educational value of the visit.

## Charitable Status:

Orana Wildlife Park and the Southern Encounter Aquarium & Kiwi House is operated as a not-for-profit Organisation by the Orana Wildlife Trust, a registered charitable trust. When you visit, you are supporting our aims of conservation, education and recreation.



McLeans Island Road, Harewood  
P.O. Box 5130  
Papanui  
Christchurch  
New Zealand

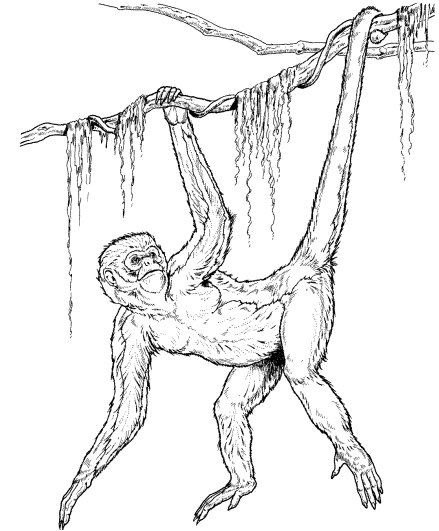
Telephone: (03) 359 7109

Fax: (03) 359 4330

Email: [school@oranawildlifepark.co.nz](mailto:school@oranawildlifepark.co.nz)

[www.oranawildlifepark.co.nz](http://www.oranawildlifepark.co.nz)

# Zoo School



**Orana Wildlife Park**

*Zoo School - Where learning comes alive!*

# Zoo School

The *Zoo School* is Orana Wildlife Park's Learning Experiences Outside the Classroom (L.E.O.T.C.) Education Programme supported by the Ministry of Education.

Our registered teacher provides interactive learning experiences for students ranging from New Entrants to Year 13. These experiences are created to integrate with the New Zealand Curriculum Framework and students classroom learning.

With a focus on New Zealand Native and African animals we have around 400 animals representing 70 different species.

Orana Wildlife Park is set on 80 hectares of park like grounds and is New Zealand's only open range zoo.

Bookings can be made in the morning or afternoon from 9am onwards at a time most suitable to you.

Programmes can include public feeds such as "Spider monkeys", and "Native birds" but also provide special encounters for your group such as "Rhino encounter" and "Giraffe feed" on request.

Education programmes are typically 2 and a half hours long. We encourage you to include time for exploration of at least two hours if time allows. All learning takes place with animals in view and includes hands on or close encounters where possible.

# Programmes

Programmes can be developed to fulfill your requirements in any year level or area of the Curriculum. The list below outlines some of the most commonly requested programmes and curriculum areas:

Primary Science	
Classification	Wild animals
Endangered Species	NZ Native Wildlife
Adaptations	Farm animals

Social Studies	
Animal careers	Animal habitats
Endangered species	

Secondary Science	
Conservation	Genetic Diversity
Introduced Species	Food webs
Adaptation	Classification
Reproduction	Locomotion

Technology
Enclosure and park design

As the species on display change from time to time and new education programmes are constantly under development it is an excellent idea to check our website for updates:

[www.oranawildlifepark.co.nz](http://www.oranawildlifepark.co.nz)

# Activities

We provide a wonderful educational environment offering many unique experiences that cannot be replicated in the classroom: Here are just a few examples (check out the website for more).

## Close Encounters of the Reptile Kind

Have you or your students had the opportunity to get up close and personal with a Tortoise? This is a hands on lesson where students can gently feel the strong protective shell and scaly legs of "Bumps", our friendly Tortoise. What are Scutes? Learn all about this 'cold blooded' creature and his Reptile relations. You can also check out our awesome Reptile house, to see Tuatara, Skinks, Geckoes, and a GIANT Lace Monitor Lizard! TERMS 1 AND 4 ONLY!

## Roldo – Our Friendly Llama

Roldo, our very special Llama friend loves children as much as they love him. A handsome and intelligent animal with a very placid nature, Roldo appeals to students of all ages. This interactive activity includes being able to pat and groom Roldo and feed him one of his favourite foods carrot nibbles. Where in the world do Llamas come from and what does a Llama saddlebag look like? Learn what Roldo's coat is made of. Look at his interesting hooves and long eyelashes. How do these come in handy?

## The Touch Room

The 'Touch Room' displays a collection of quills, skulls, pelts, feathers, claws, eggs, sloughs and horns for students to investigate, as part of their science or social studies based unit relating to endangered species or conservation. A collection of past and present fashion garments made from real pelts, fibre, hair and man-made fabrics is always of great interest to students. This activity offers a unique opportunity for students to discuss and think critically about their values and attitudes towards animals and conservation issues.

*The 'touch room' is suitable for Year 5—13 students.*