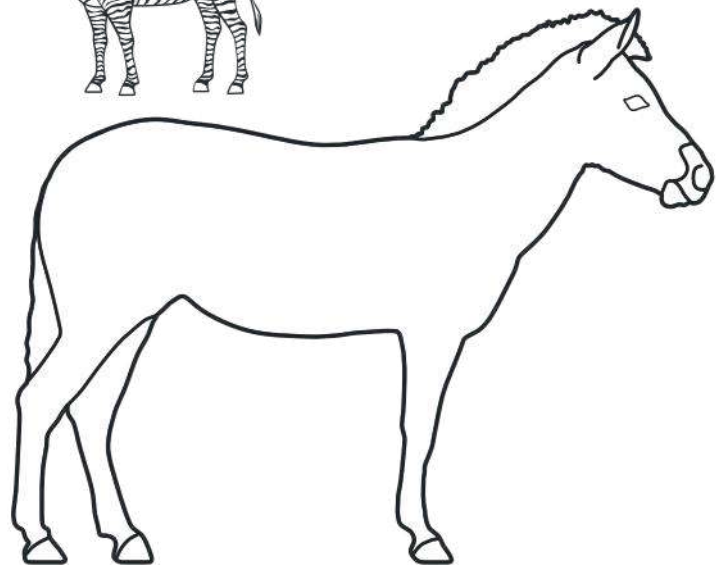


Buggin' Wildlife at Orana

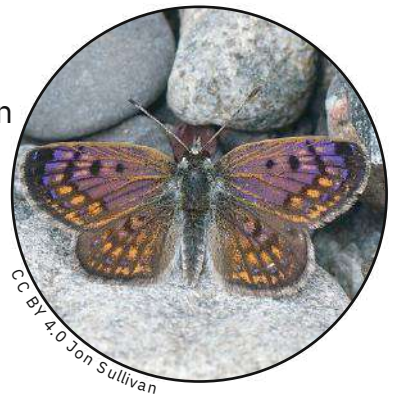
Animals are interconnected with each other and the world around them. Using clues from Canterbury Museum entomologists (insect scientists) discover how various insects are linked to animals and habitats at Orana Wildlife Park. As you explore keep an eye out for bugs.

In this photo, can you spot the tiny bloodsucker? This little tick feeds on the blood of a native Aotearoa New Zealand animal, sometimes called a living fossil. Head to the reptiles area to find which animal matches the one in this photo.

Which is it? _____

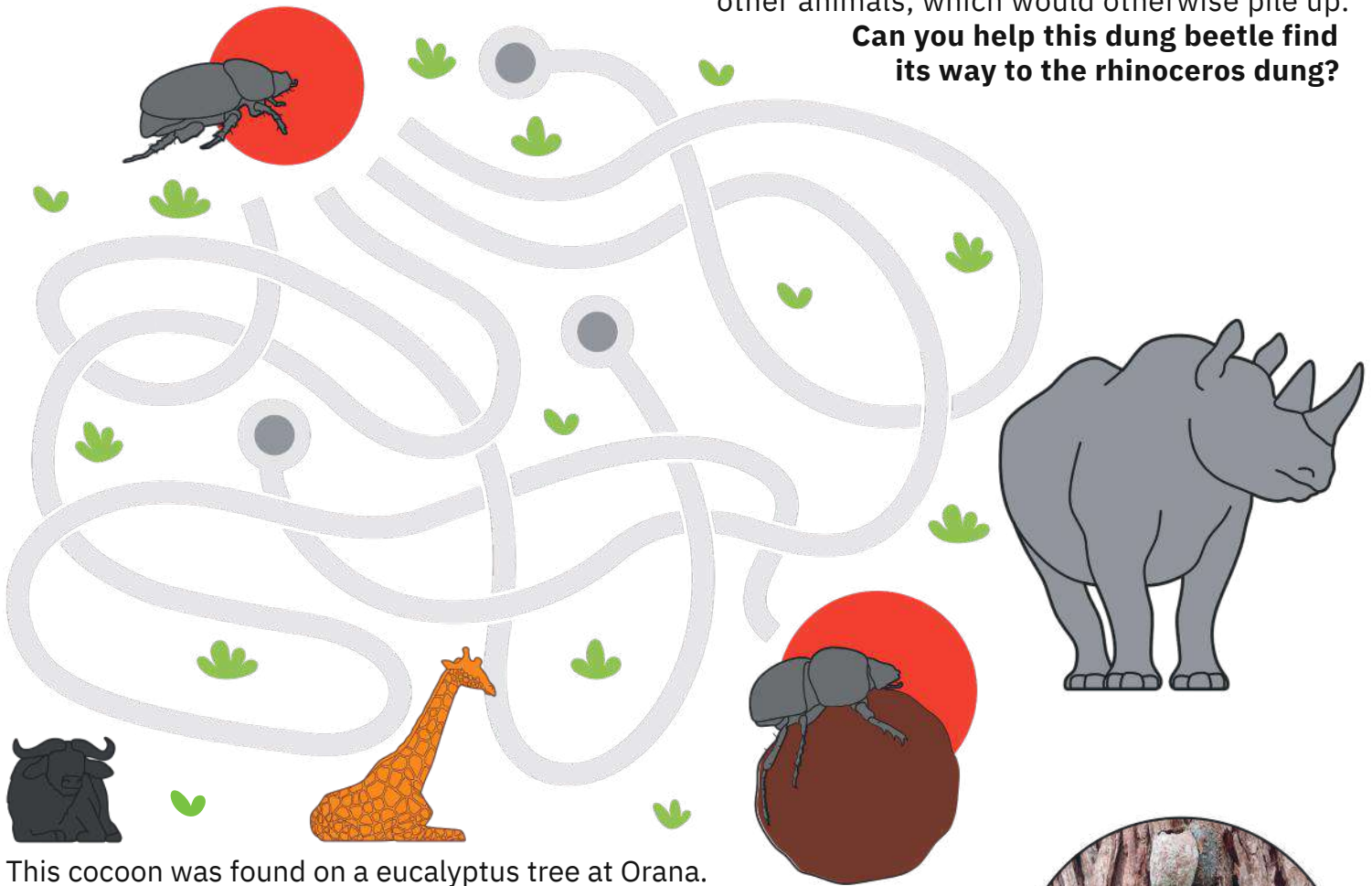


Boulder copper butterflies used to be common throughout Waitaha Canterbury, but there's less of them today because their habitats have been destroyed. In partnership with Orana, Tuia Burnside Primary School designed and constructed a new habitat for them near Zoo School. **Can you find their habitat and spot what these butterflies need to live? Circle them below.**



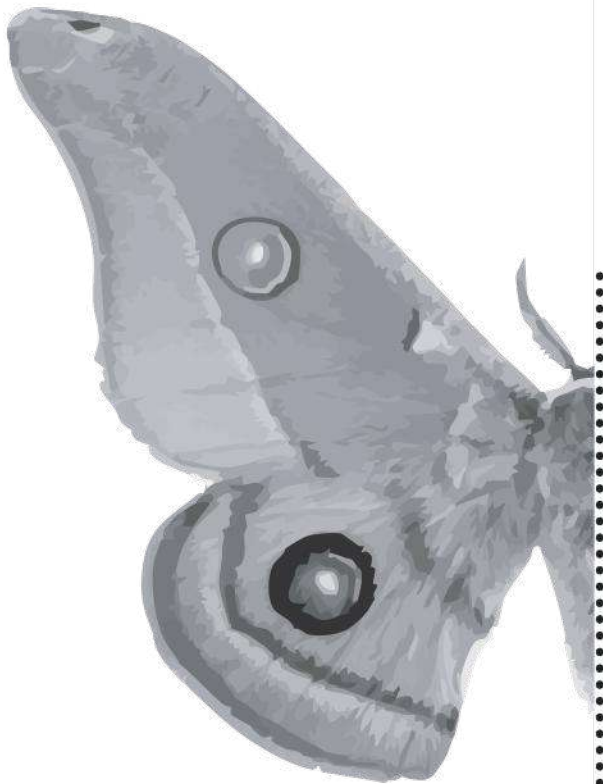
Dung beetles are important cleaners in the environment. They help remove the poo (dung) from other animals, which would otherwise pile up.

Can you help this dung beetle find its way to the rhinoceros dung?



This cocoon was found on a eucalyptus tree at Orana.
Look around and you'll see them everywhere.

Complete the other half of this emperor gum moth and reveal what emerges from these cocoons.



CC0 Georgia Steel